

# Library Learning Spaces: Creativity, Collaboration, and Technology

Emily Thompson and Christopher Hebblethwaite

Penfield Library, Oswego State University of New York

## Characteristics of a Collaborative Learning Space

Collaboration is an inclusive process that is maximized when everyone can contribute

Technology in a collaborative space should be simple and convenient to allow people to share and manipulate data and ideas.

The space should facilitate communication and collaboration; help people connect-share-communicate across a table, a room, or the globe.

## Igloos to IGLUs (Innovative Group Learning Units)



## IGLUs – cont.



## Lake Effect Conference Room



## What people liked about the IGLUs



## Who supports these spaces?

- Computer Lab Assistants (students)
- Librarians at our Information Desk
- Technology Support Professional

## Who uses this space and why?

- Students
  - Study groups
  - Assigned team projects
  - Presentation practice
  - Club/organization meetings
- Staff
  - Committee meetings
  - Webinars or cable broadcast teleconferences

## Study areas with mobile white boards



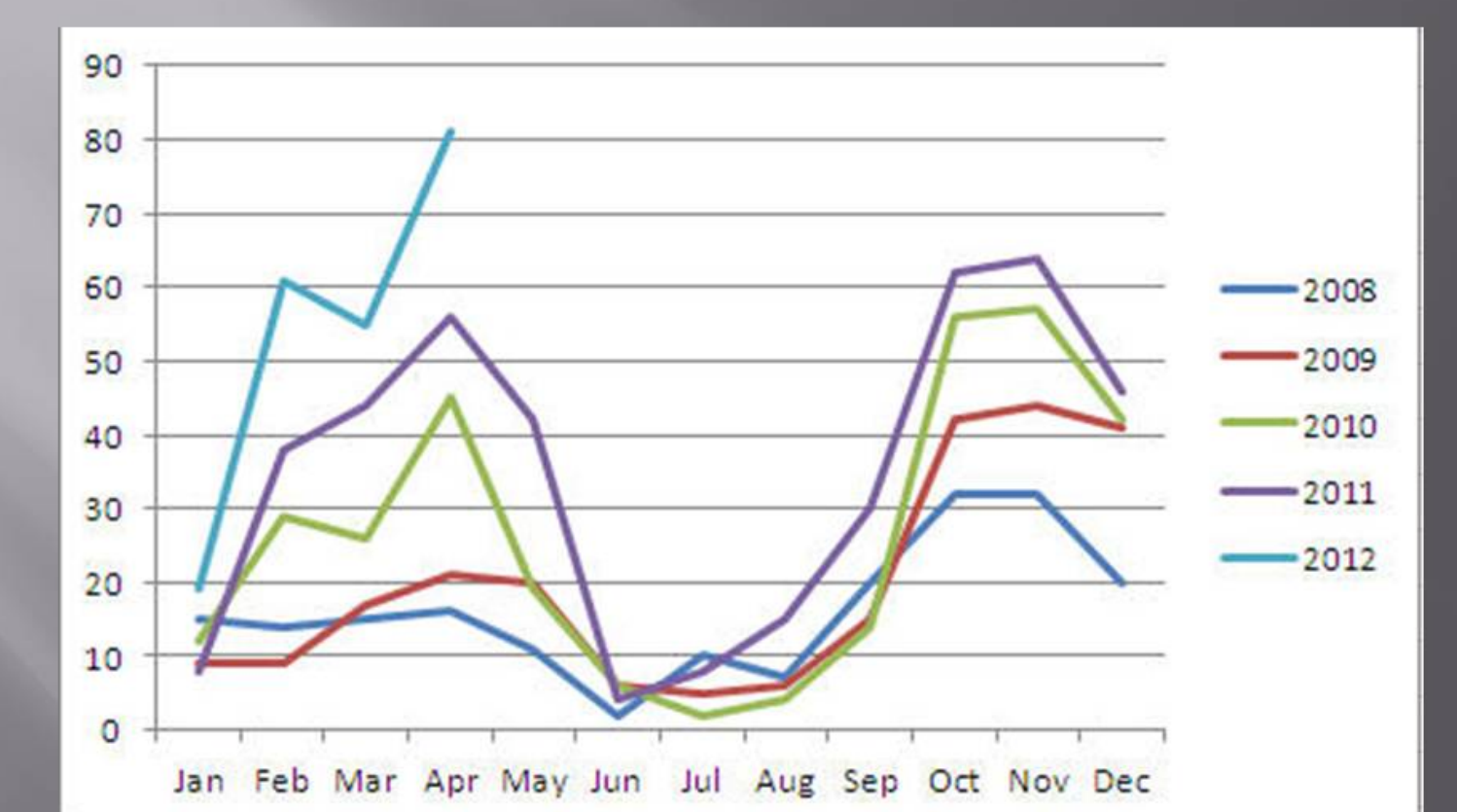
## Who made these spaces happen?

- Facilities Maintenance and Operations
  - Building /Construction
  - Electricians
  - Painters
- Campus Technology Services
  - Telecommunications
  - Instructional support
- Library Building Coordinator
- Custodial staff

## Improvements they wanted



## LECR Use Jan 2008 - Apr 2012



## Group Study Rooms



## Book Nooks



## Practice Presentations in our Classroom



## LECR Use – Students vs Fac/Staff

